

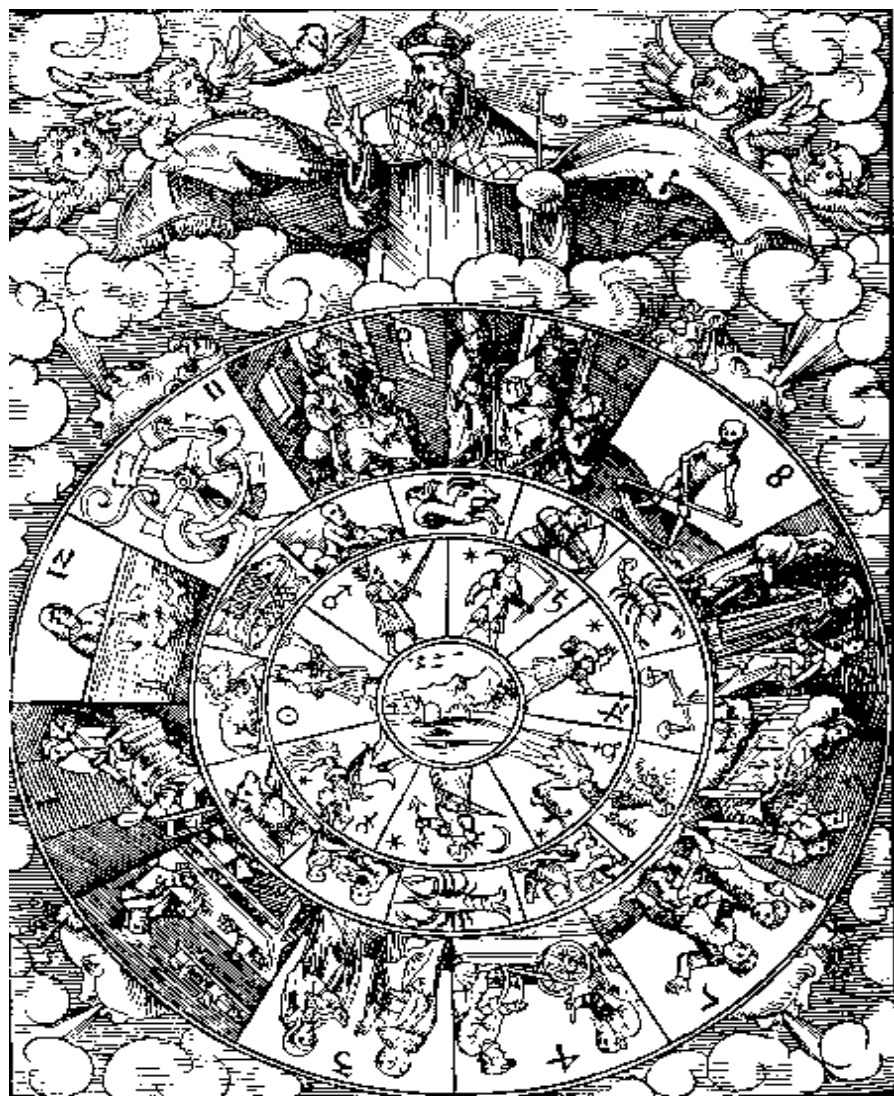
The Merlin Report for

**Albert Einstein**

14 March 1879

11:30

Ulm, Germany



Astro Counselling

Weingartenstrasse 7  
CH-8555 Müllheim Dorf

+41 76 320 0513

The interpretation of your astrology chart begins on the following page.

You will find that the interpretation of your chart is written in simple language, uncluttered by astrological jargon. If a statement appears to contradict another statement, then you exhibit these opposite qualities at different times in your life. For example, a statement that you are highly sociable and gregarious and a statement that you prefer solitude seemingly contradict each other; this means that you vacillate, and need both sociability and solitude at different times.

The astrological factor that the interpretation is based on is also given. The astrological factor is given for the benefit of astrologers and students of astrology. If you are not a student of astrology, then obviously the factor will not be meaningful to you, and you can ignore it.

If you find this interpretation of your birth chart interesting and informative, you might want to discuss your birth chart with a professional astrologer to learn more about the astrological influences on your life.

\* \* \* \* \*

Your birth chart interpretation is based on the positions of the planets at the time of your birth. For the benefit of students of astrology, these positions, along with other technical information, are listed below:

Sun	23	Pis	30	Pluto	24	Tau	44
Moon	14	Sag	32	N. Node	2	Aqu	44
Mercury	3	Ari	09	Asc.	11	Can	39
Venus	16	Ari	59	MC	12	Pis	50
Mars	26	Cap	55	2nd cusp	2	Leo	53
Jupiter	27	Aqu	29	3rd cusp	22	Leo	54
Saturn	4	Ari	11	5th cusp	8	Sco	21
Uranus	1	Vir	17	6th cusp	16	Sag	05
Neptune	7	Tau	52				

Tropical Koch Local Mean Time observed  
GMT: 10:50:00 Time Zone: 0 hours West  
Lat. and Long. of birth: 48 N 24 10 E 00

Aspects and orbs:

Conjunction	: 7 Deg 00 Min	Trine	: 5 Deg 00 Min
Opposition	: 5 Deg 00 Min	Sextile	: 4 Deg 00 Min
Square	: 5 Deg 00 Min	Quincunx	: 3 Deg 00 Min
Conjunct Asc:	3 Deg 00 Min Above,		5 Deg 00 Min Below

## Chapter 1: General Characteristics

Your fundamental needs, values, and orientation towards life are symbolized by the four astrological elements. Each person has their own unique balance of these four basic energies: fire (warmth, inspiration, enthusiasm), earth (practicality, realism, material interests), air (social and intellectual qualities), and water (emotional needs and feelings).

Your "elemental make-up" is described below. Remember that most people are "unbalanced" or lopsided, and if you are lacking or deficient in a certain element (or elements), it simply means that you need to consciously develop that aspect of yourself to learn to appreciate and/or to work harder in that dimension of life.

Sometimes we overvalue the element that we are least endowed with, sensing it as a lack within ourselves, but more often we neglect or ignore it. The qualities described below will be reiterated and explained in more detail in the following chapters.

Your life is apt to be full of emotional extremes, turbulence, joy and sorrow, arising out of your own passionate nature and unpredictability. You are impulsive and temperamental. For you, everything is intensely personal and colored by emotion. You may have difficulty viewing a situation from a detached, impartial or rational perspective, and you have little inclination to structure and order your life. However, developing self-discipline, organization, and focus is essential. Otherwise you will be prone to tremendous moodiness, alternating between high inspiration and despondency.

At times you feel much internal pressure, for you have two strong impulses which can be in conflict with one another. The desire for independence and freedom, the need for self expression and ego recognition, and an urge to leave the past behind in order to propel yourself into new experiences may be at odds with other, equally strong needs: attachments to people and to the familiar, a compelling urge for emotional closeness and union, and a desire for security. Balancing these two drives is a significant challenge for you.

Even though your life is less even and perhaps less stable than others', most likely you would not change it, for you are very alive, sensitive, and responsive to the ever-changing, dynamic quality of life.

You tend to lack the ability to analyze yourself or your life in a detached, objective way. You feel and experience but do not necessarily understand or reflect upon your experience, and thus find it hard to communicate or talk about it. Really taking in what someone else has to say can be hard for you – you do not readily adapt to new ideas or people, and as a result may become inflexible or limit your experience of life. A broadening education and exposure to different cultures and types of people is very beneficial to you. Otherwise you are apt to be rigid and even prejudiced against those outside your own circle. (Arthritic conditions, poor flexibility, or poor circulation may reflect this).

You also tend to distrust people who are free with words or to feel inferior to those who are more articulate and intellectual than yourself. You learn much more readily by watching, doing, or apprenticing than by reading or by being told about something.

*Astrological influences analyzed in Chapter 1:*  
*Fire and Water are Strong (F,E,A,W Scores = 20,7,2,20)*  
*Air is Weak (F,E,A,W Scores = 20,7,2,20)*

## **Chapter 2: How You Approach Life and How You Appear To Others**

The following is a description of your basic stance towards life, the way others see you, the way you come across, the face you show to the world. In Chapter 3 you will read about the "The Inner You: Your Real Motivation", which describes the kind of person you are at heart and where your true priorities lie. Read this chapter and the next one and compare them – there may be significant differences between them, in which case "the inner you" may not shine through and others are in for some surprises when they get to know you at a more than superficial level. This chapter describes the costume you wear, your role in life, while Chapter 3 talks about the real person inside the costume.

You appear gentle and soft, and you act rather reserved with others until you know them well and feel it is safe to be open with them. You have a strong need for emotional security and a sense of belonging, and are deeply attached to the past: your heritage, roots, family, cherished friends, familiar places, etc. Making radical changes or moves away from what is known and safe can be very painful and difficult for you. You tend to cling and hold on to people, memories, possessions of personal or sentimental significance. Having a home, a safe haven, is very important to you.

You approach life emotionally and subjectively and are sensitive to the emotional atmosphere, the subtle undercurrents of feeling in and around you. Instinctive and nonrational, you are often unable to give a clear, simple explanation for your actions. Something FEELS right, or it doesn't.

Your emotions and personal loyalties tend to color your thoughts and opinions. You view life from a very personal perspective and often cannot mentally detach yourself from your own personal bias and prejudices. You are apt to be concerned primarily with how something affects you and those dear and close to you, rather than with the principle or the broader social implications. For instance, you may be very patriotic and feel that whatever "my country" does is right without really knowing much about the other nation's policies or point of view. Put simply: if it is good for me and mine, it is good. If it is not good for me and mine, it is no good.

You are tenaciously loyal, protective, and supportive of those you care about, and have a very strong nurturing, motherly nature (regardless of your gender). You empathize with others and intuitively sense the feelings and needs of other people. Compassionate and sympathetic, you are easily moved by others' pain, and you are often the one others seek out when they need comfort, reassurance, or help.

Your moods fluctuate and change frequently and you are sometimes open, sometimes withdrawn emotionally. You communicate nonverbally and appreciate a person who can pick up subtle cues and hints, rather than having to make everything explicit.

You never forget either kindness or unkindness shown to you.

You tend to blend in with and take on the characteristics of the people in your surroundings, and may thus not make a powerful individual statement of your own. You may project an aura of glamour or "make-believe", and enjoy trying on different personalities at different times.

In significant ways, your emotional nature and personal needs are at odds with the way you present yourself. (Compare this chapter with the description of your moon sign in Chapter 4.) As a result of this inconsistency, you may be uncomfortable showing your instinctive responses and true feelings. You may put them aside, maybe even be ashamed of them.

When you are in an emotionally charged situation, those who don't know you well may be quite surprised at your reactions or behavior. The real challenge, though, is to completely accept yourself, so that you don't act as if your emotional needs and impulses didn't count for very much.

*Astrological influences analyzed in Chapter 2:*  
*Cancer Rising*  
*Neptune Sextile Asc.*  
*Moon Quincunx Asc.*

**Chapter 3: The Inner You: Your Real Motivation**

In addition to your strong personal loyalties and the devotion you feel for your nearest and dearest (as described in the previous chapter), you have great compassion and sensitivity to people of all walks of life. You have a gift for understanding and appreciating a wide variety of art styles and life styles.

Also, be careful not to be taken advantage of by others. Your good heart and innocent, unsuspecting attitude can make you a victim of others' greed. If this happens, do not allow yourself to become bitter and resentful towards life, but instead allow your great compassion and sensitivity to grow and shine rather than be dimmed by a few mistakes.



At heart you are very gentle, impressionable, and receptive –a dreamer. The world of your imagination, feelings, and intuition is as real to you as anything in the outer world, though you may have trouble verbalizing or interpreting your inner experiences in a way others can understand. Mystical, artistic, musical, emotional and imaginative, you have a rich inner life, though you may seem rather unobtrusive and quiet outwardly. You usually keep to yourself.

You have great sensitivity and empathy with others, and you often sense things psychically or intuitively which prove to be correct. You are tolerant, forgiving, and nonjudgmental, accepting people unconditionally regardless of their flaws, mistakes, or outward appearance. You have deep compassion for the suffering of any fellow creature and often feel others' pain as if it were your own. You sympathize with the needy, the disadvantaged, the misfits of society. You are capable of giving selflessly, living a

life of devoted and compassionate service to others, as a healer, physician, social worker, or minister. However, you tend to give indiscriminately, to let others take advantage of your kindness, and to encourage the weak to remain so by becoming dependent upon you. You have little sense of boundaries, of limits, of knowing when to say "no". Moderation and self-discipline are not your strong points.

You are a lover and a peacemaker rather than a fighter, and you try to avoid open conflict. You will patiently ignore or "tune out" problems and hope they will go away by themselves, rather than directly confronting them, and you tend to lack the positive fighting spirit that is sometimes necessary to overcome challenges. You are fluid, open, nonresistant, and somewhat passive. You do things in a subtle, often covert, manner.

Your gifts may also lie in the realm of the creative, artistic, or musical, for you have a great sensitivity, inspiration, and limitless imagination. You respond very strongly to beauty and to love.

Your faults include a tendency to be lazy and negligent, and to wallow in self-pity rather than taking strong, definite action to change your life for the better. You also tend to become so detached from your immediate environment that you live in a disorderly, chaotic sort of hodgepodge, though this probably bothers those around you more than it bothers you.

Your career, reputation, and public image are very important to you. You have a strong desire to be influential or make your mark on the world. The merely personal sphere does not satisfy you; your ambitions include making a major contribution and receiving broad recognition for your unique effort and gifts. You may undervalue the personal or inner side of life.

You can be an inspiring leader of a team or group effort. Your dynamism and energy evokes the same in others, and you see healthy competition between people as a plus. Generally, you enjoy fine health as well.

You undergo deep, transformative changes in your life with relative ease and a minimum of conscious resistance. Because you don't avoid the depths, you have access to a lot of personal power and strength. Without realizing it or seeking it, you're apt to have quite a potent effect on the people you come into contact with, even superficially. Others sense that you're a force to be reckoned with.

*Astrological influences analyzed in Chapter 3:*

*Ascendant in Cancer and Sun in Pisces*

*Sun in Pisces*

*Sun in 10th house*

*Sun Sextile Mars*

*Sun Sextile Pluto*

## **Chapter 4: Mental Interests and Abilities**

Outspoken and direct, you are always eager to express your ideas and opinions and don't mind opposing the consensus and stirring up a little controversy. You have fresh, original ideas and much enthusiasm for anything new and untried, but once the novelty has worn off, you are interested in another new idea or project. You never seem to have enough time to do all you want to. You are very honest, speak decisively and convincingly about things you believe in, and are unable to pretend to agree with someone if you honestly don't. You may be somewhat deficient in tact.



You think a great deal about your career, your reputation and public image, and the way you make a contribution or impact on the world at large. Public speaking or communications of some other kind is likely to be an important aspect of the work you do.

Your mind is serious and deep, and you will rarely offer an opinion on any matter until you have thoroughly considered and studied it. You have excellent powers of concentration and enjoy studying or thinking deeply in solitude. You have an aptitude for research or doing mental work which requires precise, organized thinking, attention to detail, and a methodical approach. You are conservative and something of a skeptic, and may be narrow-minded and closed to new ideas, especially if there is no concrete proof or scientific verification of them. Socially, you are rather reserved, uncommunicative, and uncomfortable with light, frivolous conversation.

You will notice that the description below contradicts some of the statements made in the previous paragraphs. Above your thinking is depicted as careful, conservative, methodical, and possibly narrow or rigid, while the following information characterizes your mind as quick and innovative. Both are true! You incorporate both ways of thinking – the inspired, inventive AND the deductive, ordered. Here is a description of the more free-flowing aspect:

Your mind works in a rather electric, inspired, sometimes brilliant way, and you grasp new concepts very readily. However, your retention may be poor, as you tend to leap from one idea to another in a flash, and often without thoroughly digesting any of them. Your mind may race so quickly that it is hard for you to sit still for any length of time. You have a highly sensitive nervous system and need a relatively calm, stable environment to be at your best. Avoid overstimulating, frenetic places in order to stay balanced.

*Astrological influences analyzed in Chapter 4:*  
*Mercury in Aries*  
*Mercury in 10th house*  
*Mercury Conjunct Saturn*  
*Mercury aspects Saturn and Uranus*  
*Mercury Quincunx Uranus*

**Chapter 5: Emotions: Moods, Feelings, Romance**





Open and generous, you enjoy a wide circle of friends and acquaintances and you thrive on sociability and fellowship. You are adventurous, playful, freedom-loving, and always ready for a good time. You rarely allow obstacles or difficulties to keep you down, for no matter how bleak the past or present, you always expect a better, brighter future. In fact, you are uncomfortable with your own or other people's problems and emotional pain. You often try to "cheer up" or offer philosophical advice to those who are hurting, but unwittingly you avoid or

ignore the emotions involved.

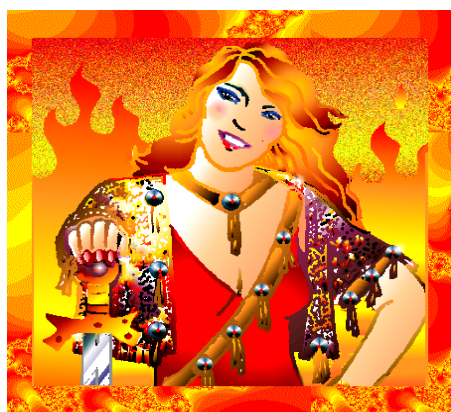
Friendship means a great deal to you, perhaps even more than love or romance. For you to be happy, your mate must be your best friend and encourage your aspirations and ideals. You also need a great deal of emotional freedom and mobility.

You are emotionally expressive and often dramatize your feelings, acting them out or blowing them out of proportion. You can not hide your instinctive emotional reactions to people or situations, and you don't make any pretenses about your personal sympathies or antipathies.

You have a childlike openness and playfulness which is very appealing to others, but which sometimes gets you into trouble, as you take risks on impulse or whim.

You feel that little, daily acts of caring and thoughtfulness are essential to the happiness and success of a relationship and you know how to make others feel accepted, loved, and cherished. You enjoy good relationships with women.

Your love feelings and desires are easily aroused but it may be difficult to sustain your romantic interest in a relationship after the initial, exciting "chase and conquest". You enjoy a partner who is dynamic and alive, someone with a strong independent streak, and you do not like things to become too peaceful or predictable in the love arena. You want to see sparks fly once in awhile, even if that means instigating a fight.



Promoting beauty, the arts, or entertainment can make you very happy. You want to contribute something positive and loving to the world at large and you want to be recognized for your beauty, artistic gifts, or loving generosity. You may "marry" your work – that is, be more involved in your career than in your private life. You are a natural hostess or diplomat.

*Astrological influences analyzed in Chapter 5:*

*Moon in Sagittarius*

*Moon in 5th house*

*Moon Trine Venus*

*Venus in Aries*

*Venus in 10th house*

## Chapter 6: Drive and Ambition: How You Achieve Your Goals



You are serious about your ambitions, and disciplined, dedicated, and tenacious in pursuing your objectives. Your drive and energy are directed toward practical material accomplishment and achieving concrete results. You also strive to be in a position of authority and social influence; you enjoy being the person who is in command.

You are hard-working and capable of foregoing immediate comfort in order to achieve your long-range goals. You can easily become a workaholic

and are very responsible and conscientious about doing a thorough job.

Realistic and pragmatic, you are an excellent strategist. You attain success by formulating a conservative and workable plan and following through with it. You are not a gambler when it comes to attaining your goals; you depend on your own efforts and perseverance rather than good fortune. You have a natural shrewdness and instinct for business or organizational management.

You are attracted to feisty, dynamic, strong-willed people, and you seem to need a lot of fireworks in your personal relationships. You can be very combative, or get involved with people who are. Ideally you will join with people who are energetic and ambitious, but not too domineering or aggressive.

You have a strong sense of mission and you instinctively know that to achieve anything great, one must eliminate superfluous activities, and give oneself wholly to the goal one wishes to accomplish. Your zeal, enthusiasm, and clarity of purpose enable you to succeed and to achieve whatever you aim for. You have a strong will, but you are usually quiet and understated about it.

You may have to overcome something in your background or personal past in order to achieve your long-range goals and ambitions. Sometimes you're apt to feel pulled in two different directions -- what others expect of you or what you need to do to progress, versus what your old conditioning or your emotional predisposition would have you do. Overcoming the pull of the past is the key.

*Astrological influences analyzed in Chapter 6:*

*Mars in Capricorn*

*Mars in 7th house*

*Mars Trine Pluto*

*Moon Square MC*

## Chapter 7: Growth and Expansion: Areas That You Enjoy

Your strength lies in your ability to be innovative, open to new progressive concepts, willing to experiment and to reject customs and traditions when they cease to serve any positive function in the present. Also, you have an expansive view of the world, one that includes humanity and not only your own small, personal circle.



You are very open-minded and deeply curious about distant places and ways of thinking and living that are different from your own. The urge to travel widely and to experience as much of the world as possible is very strong in you. The study of philosophy or religion also interests you a great deal. You benefit from your contact with other cultures, and you may be involved in linking those who are far apart geographically or philosophically.

Your gaiety, enthusiasm, optimism, and a positive, energetic, upbeat attitude generate a lot of opportunities for you. You enjoy being spontaneous and taking risks. You must have a great deal of personal freedom and independence, and prefer the "wide-open spaces" to a very rigid, structured lifestyle. Your sense of humor and playfulness enable you to make it through the rough spots in life, as well as to bounce back when those gambles you make do not quite pan out. You enjoy surprises and exploring new territory, both intellectually as well as physically.

You aim high, have great vision, and are never satisfied with yourself unless you can achieve your goals in a big way. You are very opportunistic and are always ready to capitalize on a good idea. You utilize contacts with prominent and successful people to advantage, and are likely to win yourself an important and lucrative position in life.

*Astrological influences analyzed in Chapter 7:*  
*Jupiter in Aquarius*  
*Jupiter in 9th house*  
*Jupiter Opposition Uranus*  
*Jupiter Square Pluto*

**Chapter 8: Areas That Challenge You Or Are Difficult For You**

You have difficulty asserting your will and desires directly and openly. You also may suppress your anger and aggressiveness. Developing self-confidence, courage, and faith in yourself are important tasks for you.



You are very conscientious, responsible, and concerned with your duty, your public image and reputation, and becoming a person of stature in the world. You understand the need for hard work and careful planning in order to accomplish anything substantial and you're capable of much

self-discipline and patience once you set your sights on a goal.

But you are very judgmental and hard on yourself if you fail to attain success, and you can become dry, bitter, or cynical if the world doesn't recognize your efforts.

The side of you that wants and needs structure, order, stability, and a disciplined way of life is at odds with your urges for unfettered freedom, change, excitement, and discovery. There is apt to be much discontent, inner stress, and tension due to this, and at times you find it hard to relax. You may act out in a rebellious way now and then, or clamp down hard on yourself, in an attempt to strictly control your "wild" impulses. Your task is to try to find a reasonable balance between order and creative chaos in your life.

Now we will discuss patterns of behavior which you instinctively and habitually revert to when under stress – a mostly unconscious process and one which you are apt to overdo because it is so familiar and thus easy for you. The direction you need to follow in order to develop balance, greater awareness, and wholeness is also described.

Your path lies in cultivating idealism and humanitarian feelings, being concerned with how your actions impact the world at large, perhaps becoming more aware of the social implications of your life style and personal choices or becoming active politically. Participating in organizations that support your ideals is one way to do this.

When under stress you are likely to become overly focused on yourself and your own little world.

Instead of "how will this benefit or hurt me?" your focus needs to shift to "how will this affect us all?".

Ideally, you need to strike a balance between doing for yourself and doing for others, by discovering how your unique gifts can contribute to the good of all.

The arena you are most likely to wrestle with these issues is in your marriage and other intimate, one-to-one relationships. You may see the qualities you need to develop more fully (described above) in your partner. It is important for you to recognize, appreciate, and listen to the people in your life who express such attributes, as well as developing them yourself. Put energy and attention into learning about others, and about yourself through others.

The following are specific activities that will support you in your growth. These may or may not feel natural to you, and often there is some feeling of resistance or initial awkwardness about doing these things, but they are important on your path to wholeness.

Be a warrior and cultivate a positive, victorious, active approach to life and to any problems you face. Act on your own behalf instead of stalling, waiting, or hoping someone else will do it for you. Assert yourself openly and courageously and don't be afraid to make mistakes or fall down. Any new initiative is likely to have a few trial runs. Stir up a healthy fighting spirit, pick yourself up, and go! Appreciate conflict and confrontation as a way to grow.

*Astrological influences analyzed in Chapter 8:*

*Saturn in Aries*  
*Saturn in 10th house*  
*Saturn Quincunx Uranus*  
*N. Node in Aquarius*  
*N. Node in 7th house*  
*N. Node Conjunct Mars*

## **Chapter 9: Originality and Imagination**

### **Areas Where You Are Creative, Unique, Unstable, or Compulsive**

You grasp new concepts quickly and are interested in new technologies, discoveries, and innovations. Unconventional ideas and creative, original approaches to problems are very attractive to you also. You are easily bored and may have trouble concentrating on one idea or task at a time. You have an inventive mind.

You are a very idealistic person, and you want to see your ideals, hopes, and dreams made concrete and real in the everyday world. You are driven to put your ideals into action.

When young you may be rather aimless or confused about your place in the world. In early adult life it is likely that you struggle to find ways to express your imagination, fantasies, and ideals in your career. Work that involves compassionate service (such as medicine or the ministry) may be your calling. If you lack personal integrity and honesty, you quickly go to the opposite extreme and you can con others through dishonesty and trickery. Music, art, film-making or entertainment are also areas in which you are well-suited.

You may have a deep aversion to groups, associations, clubs, or organizations of any kind. Any such group you become involved in is likely to be either for intense personal growth, change, and healing, or centered around social change and revising society in some manner.

*Astrological influences analyzed in Chapter 9:*

*Uranus in 3rd house*  
*Neptune in 10th house*  
*Pluto in 11th house*

## **Chapter 10: Generational Influences: Your Age Group**

In this chapter we will discuss characteristics and traits of your generation. Of course, you may not share all of the characteristics of your generation, but you are greatly affected by the tone that is set by your generation.

The first topic is "The Subconscious and Emotional Drive of Your Age Group". In this section we will describe a deeply felt urge, even compulsion, of your age group. This deeply felt drive comes to the surface with great force and power, and consequently leaves in its wake considerable upheaval and change. The second topic is "The Ideals and Illusions of Your Age Group", that describes the dreams, fantasies, and spiritual aspirations of your age group. The third and last topic is "What is New and Different in Your Age Group", which describes areas in



which your age group tends to be innovative, inventive, unusual, and also where it may be unstable and unreliable.

The characteristics described below may affect a group of people for anywhere from a few years to about 30 years. There are one or more different astrological factors described in each of the three sections below.

### **The Subconscious and Emotional Drive of Your Age Group**



You are part of a 30 year group of people who are highly motivated by practical concerns. There is a very strong psychological need to feel that there is a firm foundation and a solid basis for one's life. There is an irresistible urge to make sure that the basics are taken care of and everything is built on a solid foundation. Consequently, your generation works hard to improve the economy, ensure adequate food supplies, maintain and build roads and buildings, increase productivity, and develop other facilities that are essential foundations for a healthy, thriving economy.

There is a strong tendency to measure the value of something by its utilitarian value. For example, in education and research the emphasis is on ideas of practical value and there is little support for more purely theoretical research.

Your generation is pragmatic and productive, and is driven by a need to build and DO things. This concern with practical affairs often becomes unbalanced, and a rampant materialism with little regard for humanitarian, ethical, and spiritual values often develops in your age group.

There is also a strong sensual craving in your age group, and a great deal of emphasis is placed on physically comfortable surroundings and good food. Romance is particularly important to your age group, and a great emphasis is also placed on the physical attractiveness of the opposite sex.

A small minority of members of your age group are likely to be uncomfortable with the practical and materialistic atmosphere of the times, and consequently become alienated and antagonistic towards the social norm.

### **The Ideals and Illusions of Your Age Group**

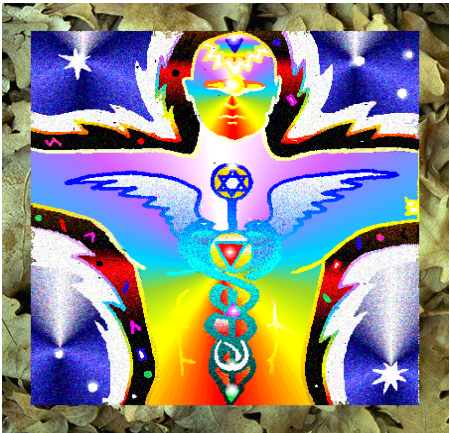
You are part of a 14 year group of people that are very practical and down-to-earth in their religious philosophy and spiritual outlook. Your age group incorporates its ideals and visions into everyday life, and invests more time and energy than other generations do in beautification projects, developing parks and recreation areas, and preserving beautiful or unique natural wildlife areas. Building construction is also done with careful attention to the aesthetic quality, and your generation finds it difficult to understand how other age groups can erect buildings with so little aesthetic appeal.



Your age group does not speculate a great deal about spiritual and metaphysical matters. You are more involved in utilizing your imagination and intuition in practical, artistic ways rather than exploring metaphysical issues. Some of the art and music of your generation is among the world's most beautiful.

**What is New and Different in Your Age Group**

You are part of a 7 year group of people who employ their skills and creativity to bring about a great deal of practical reform in education, medical care, and other social services. Your innovations are not radical or unusual, but they are usually effective.



Your generation also has a curious mixture of both conservative, ethical people, and rebellious, disruptive people. There seems to be little middle ground for your age group, and you swing to one extreme or the other. The conservative people strive to reinstate strict moral standards, want to swiftly punish criminal behavior, and strive to highlight the importance of old-fashioned values in our lives, laws, and overall life style. On the other hand, the rebellious people of your generation are angry at the established way of doing things and act in a defiant, crude, and coarse manner.

*Astrological influences analyzed in Chapter 10:*  
*Pluto in Taurus*  
*Neptune in Taurus*  
*Uranus in Virgo*